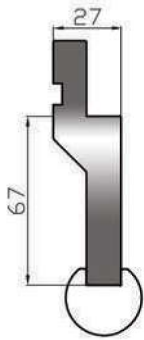


PRESS BRAKE TOOLS FACTORY CATALOGUE



US 119 h 67



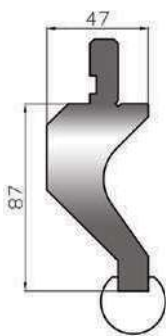
altezza height mm	raggio - radius MIN MAX		acciaio steel	max kN/mt
67,0	8,0	50,0	C45	800
lunghezze - lengths		mm 830 - 412		

US 119 h 105



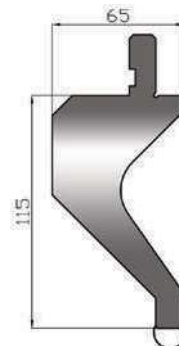
altezza height mm	raggio - radius MIN MAX		acciaio steel	max kN/mt
105,0	8,0	50,0	C45	800
lunghezze - lengths		mm 830 - 412		

US 119 C h 87



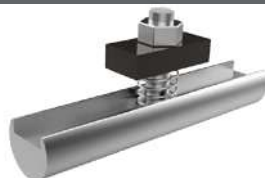
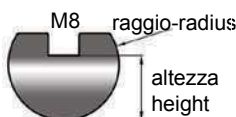
altezza height mm	raggio - radius MIN MAX		acciaio steel	max kN/mt
87,0	8,0	50,0	C45	500
lunghezze - lengths		mm 830 - 412		

US 119 C h 115



altezza height mm	raggio - radius MIN MAX		acciaio steel	max kN/mt
115,0	8,0	50,0	C45	500
lunghezze - lengths		mm 830 - 412		

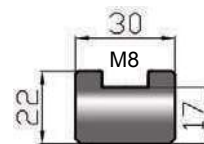
US 305 R 8 ÷ 50 mm



4 fori-holes mm 104-209-...-104 = mm 835
2 fori-holes mm 103-209-...-103 = mm 415

codice articolo item code	raggio radius	altezza height	codice articolo item code	raggio radius	altezza height
US 305/R 8	8	10 mm	US 305/R 25	25	29 mm
US 305/R 9	9	10 mm	US 305/R 27,5	27,5	34 mm
US 305/R 10	10	12 mm	US 305/R 30	30	34 mm
US 305/R 12,5	12,5	17 mm	US 305/R 35	35	45 mm
US 305/R 15	15	20 mm	US 305/R 40	40	44 mm
US 305/R 17,5	17,5	22 mm	US 305/R 45	45	50 mm
US 305/R 20	20	24 mm	US 305/R 50	50	54 mm
US 305/R 22,5	22,5	25 mm			
acciaio - steel		C45 - 39NCM3 nitrato (N)			
lunghezze - lengths		mm 835 - 415			

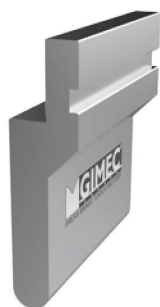
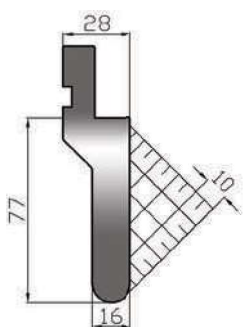
US 310



4 fori-holes mm 104-209-...-104 = mm 835
2 fori-holes mm 103-209-...-103 = mm 415

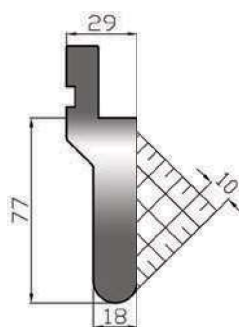
codice articolo item code	acciaio steel
US 310	C45
US 310 T	C45 T HRC 52+58
lunghezze - lengths	mm 835 - 415

US 307 R 8



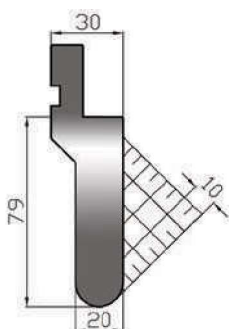
altezza height mm	raggio radius	acciaio steel	max kN/mt
77,0	8,0	C45 T HRC 52+58	1000
lunghezze - lengths		mm 835 - 415 - fraz	

US 307 R 9



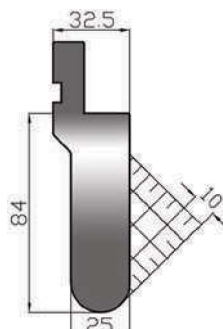
altezza height mm	raggio radius	acciaio steel	max kN/mt
77,0	9,0	C45 T HRC 52+58	1000
lunghezze - lengths		mm 835 - 415 - fraz	

US 307 R 10



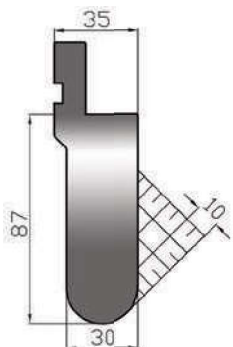
altezza height mm	raggio radius	acciaio steel	max kN/mt
79,0	10,0	C45 T HRC 52+58	1000
lunghezze - lengths		mm 835 - 415 - fraz	

US 307 R 12,5



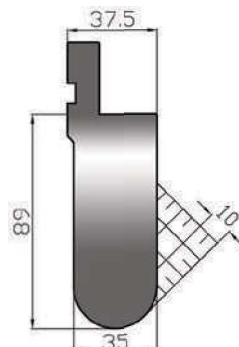
altezza height mm	raggio radius	acciaio steel	max kN/mt
84,0	12,5	C45 T HRC 52+58	1000
lunghezze - lengths		mm 835 - 415 - fraz	

US 307 R 15



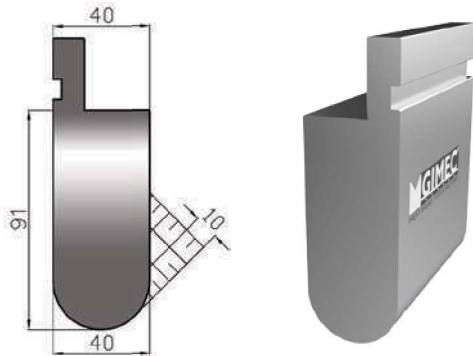
altezza height mm	raggio radius	acciaio steel	max kN/mt
87,0	15,0	C45 T HRC 52+58	1000
lunghezze - lengths		mm 835 - 415 - fraz	

US 307 R 17,5



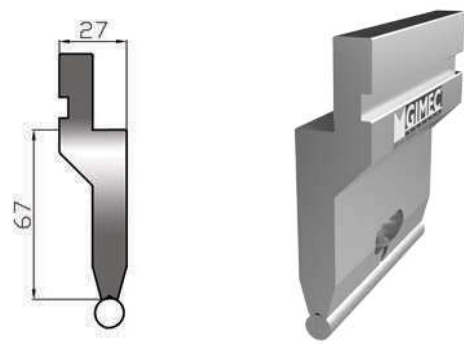
altezza height mm	raggio radius	acciaio steel	max kN/mt
89,0	17,5	C45 T HRC 52+58	1000
lunghezze - lengths		mm 835 - 415 - fraz	

US 307 R 20



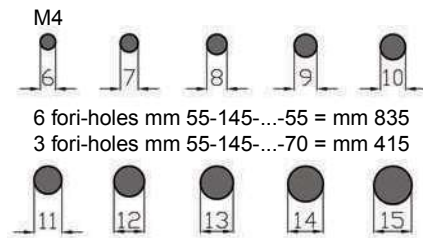
altezza height mm	raggio radius	acciaio steel	max kN/mt
91,0	20,0	C45 T HRC 52+58	1000
lunghezze - lengths		mm 835 - 415 - fraz	

US 118 h 67 SPESSORE/THICKNESS MAX 3 mm



altezza height mm	raggio - radius		acciaio steel	max kN/mt
	MIN	MAX		
67,0	3,0	7,5	C45	400
lunghezze - lengths			mm 830 - 412	

US 305 R 3 ÷ 7,5 mm



codice articolo item code	raggio radius	altezza height	codice articolo item code	raggio radius	altezza height
US 305/R 3,0	3,0	6 mm	US 305/R 5,5	5,5	11 mm
US 305/R 3,5	3,5	7 mm	US 305/R 6,0	6,0	12 mm
US 305/R 4,0	4,0	8 mm	US 305/R 6,5	6,5	13 mm
US 305/R 4,5	4,5	9 mm	US 305/R 7,0	7,0	14 mm
US 305/R 5,0	5,0	10 mm	US 305/R 7,5	7,5	15 mm
acciaio - steel			C45		
lunghezze - lengths			mm 835 - 415		



serie US®

STANDARD TOOLS